



THE  
BASIC  
INGREDIENTS  
LONDON

# PRODUCT LIST

## 2024



G005B - Roasted Sesame White 150g (Page8)

G007B - Roasted Sesame Black 150g (Page 8)



PAGE  
NO

## INDEX

- 01 Wasabi
- 02 Soy Sauce & Vinegar
- 04 Rice & Noodles
- 06 Seaweed
- 08 Sesame Seeds, Oil & Furikake
- 10 Panko & Curry
- 11 Bamboo Shoots
- 12 Ginger & Miscellaneous
- 13 Dried Mushrooms
- 14 Miso
- 15 Frozen
- 20 Shaoxing Rice Wine & Fei Tswei Wine
- 24 Non-Food
- 28 Export - Fresh Salmon
- 30 Export - Smoked & Frozen Salmon
- 34 Export - Tartan Blanket
- 36 Export - Desserts
- 38 Export - Cheese

 FROZEN PRODUCT



GLUTEN FREE PRODUCTS  
(EU) No 828/2014 : the statement 'gluten-free' may only be made where the food as sold to the final consumer, contains no more than 20 mg/kg of gluten.



Panko  
BREADCRUMBS  
LIGHT AND CRISPY

パン粉  
Panko  
BREADCRUMBS  
LIGHT AND CRISPY



NEVER ANY ADDITIVES

P002 - PANKO BREADCRUMBS 1KG (PAGE 13)

P003 - PANKO BREADCRUMBS 200g (PAGE 13)



# WELCOME

Here at *The Basic Ingredients Ltd* we are committed to supplying clean-label food products that our ancestors have been enjoying for centuries before additives came along. Many additives are legal but still harmful to our health. When it comes to additives, to comply with European regulations (EC) No 1333/2008 is compulsory but simply not enough. We go beyond legislative requirements to create safe and high-quality foods, containing minimum level of additives.

*Emma Basic* is a clean label brand that promises NEVER ANY ADDITIVES. *Emma Basic* removes not only additives but also other ultra processed raw materials harmful to you and our environment.

1. No Refined Oil
2. No Trans Fatty Acid
3. No HFCS (High Fructose Corn Syrup)
4. No Hydrogenated Vegetable Oil or Protein
5. No MSG

## FOOD SAFETY / LEGALITY / AUTHENTICITY / QUALITY

The Basic Ingredients Ltd is a BRCGS grade A certified food operator, run by a well-trained team. Each member play an important role in maintain our food safety, legality, authenticity, and quality. Prioritizing food safety is in our blood.

## NO MORE PLASTIC

Plastic is heavily used in food packing. Plastic is a major cause of pollution on our planet. Humans are drowning in plastic pollution. We believe in reusing, repairing, and recycling. We are determined to use less plastic in our product design. Plastic is classified into 7 groups. Types 3, 4, 5, 6, 7 are not east recyclable and should be avoided where possible.

## ASC (AQUACULTURE STEWARDSHIP COUNCIL)

We strive to minimise the environmental and social impact of commercial aquaculture. All our shrimp & salmon products are sourced only from the ASC certified suppliers. ASC is an international organisation that manages the world's leading certification for responsible aquaculture.

## PALM OIL

Only RSPO certified can be used.

## ETHICAL TRADING

We are a member of SEDEX and strongly believe in equal human rights. Before conducting any business with new suppliers, we require membership with SEDEX or a signed Ethical-trading declaration.

## NON-GMO POLICY

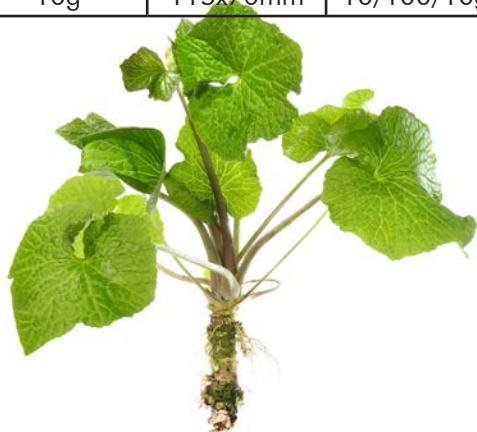
Our policy is to be GMO free. We review each ingredient carefully to ensure complete GMO absence. For raw materials that are identified as 'at GMO risk', we require a non-GMO identity Preservation scheme, inSYTE or evidence of compliance.



# WASABI OEM

Apart from the regular spec, we can make OEM any size 2g to 10g per sachet.

Net Weight	Length x Width	UoM
2g	65x50mm	6/1000x2g
2.5g	70x50mm	6/500x2.5g
2.6g	70x50mm	6/500x2.6g
3g	70x65mm	6/500x3g
5g	80x65mm	6/500x5g
6g	80x75mm	6/500x6g
10g	115x70mm	10/100/10g



**Wasabi Japonica** 山葵, also called Japanese horseradish is a plant of the family Brassicaceae, used as a pungent condiment for sushi and other foods. The plant grows naturally along stream beds in mountain river valleys in Japan.

**Horseradish** 西洋わさび is a root vegetable also belonging to the family of Brassicaceae. In the UK, it is usually prepared as a condiment and served with Sunday roast beef, also used in a number of other dishes, including sandwiches or salads.

**Mustard** マスタード is a plant of the family Brassicaceae as well. Mustard oil or mustard powder made from mustard seed is often used in Wasabi Powder or Wasabi Paste.

# GLUTEN FREE SOY SAUCE OEM

Apart from the regular spec, we can make OEM in any size. 2.1ml to 30ml.

FISH SHAPE BOTTLE	
Net Weight	UoM
2.6ml	9/500x2.6ml
4.2ml	9/250x4.2ml
8ml	10/100x8ml

SACHET	
Net Weight	UoM
4.2ml	10/100x4.2ml
6ml	10/100x6ml
8ml	10/100x8ml
10ml	10/100x10ml

CAPSULES	
Net Weight	UoM
8ml	10/100x8ml

CYLINDER BOTTLE	
Net Weight	UoM
2.1ml	9/500x2.1ml
4.2ml	9/250x4.2ml

RECTANGLE BOTTLE	
Net Weight	UoM
15ml	6/100x15ml
30ml	5/100x30ml



# Wasabi



Wasabi Powder 1kg

W003 粉わさび1kg

UoM: 10/1kg



Wasabi Paste 38g

W004 山葵ペースト10x38g

UoM: 10/10x38g



Wasabi Sachet Ambient 2g

W007 山葵ミニ常温 2g

UoM: 6/1000x2g





# Soy Sauce & Vinegar



Dashi Soy Sauce 200ml

C010 グルテンフリーだし醤油 UoM: 24/200ml



Light Soy Sauce 200ml

C011 生抽醤油 UoM: 24/200ml



GF Reduced Salt Soy Sauce 1L

C014 グルテンフリー減塩醤油 1L UoM: 12/1L



GF Reduced Salt Soy Sauce 20L

C015 グルテンフリー減塩醤油 20L UoM: 1/20L



GF Reduced Salt Soy Sauce 1000L

C016 グルテンフリー減塩醤油 UoM: 1/1000L



GF Reduced Salt Soy Sauce 2.1ml FISH SHAPE

C061 グルテンフリー減塩醤油 UoM: 9/500x2.1ml

# Soy Sauce & Vinegar



GF Reduced Salt Soy Sauce 4.2ml FISH SHAPE  
C062 グルテンフリー減塩醤油 UoM: 9/250x4.2ml



GF Reduced Salt Sauce Soy 2.1ml CYLINDER  
C068 グルテンフリー減塩醤油 UoM: 9/500x2.1ml



GF Reduced Salt Sauce Soy 4.2ml CYLINDER  
C069 グルテンフリー減塩醤油 UoM: 9/500x4.2ml



GF Reduced Salt Soy Sauce Sachet 8ml  
C070 グルテンフリー減塩醤油 UoM: 10/100x8ml



GF Soy Sauce Mini Bottle 30ml  
C072 グルテンフリー醤油 30ml UoM: 5/100x30ml



Mirin fu 20L  
C019 みりん風 20L UoM: 1/20L

# Soy Sauce & Vinegar



Sushi Vinegar 20L

C032 寿司酢 20L

UoM: 1/20L



Sushi Vinegar 1L

C035 寿司酢 1L

UoM: 12/1L

# Rice & Noodles



Sushi Rice 5Kg

V102 寿司米 5kg

UoM: 4/5kg



Japonica Rice Short Grain 10kg

V101 寿司米 10kg

UoM: 1/10kg



# Rice & Noodles



Konjac Fettuccine 12/200g

N000 こんにゃくフェットチーネ UoM: 12/200g



Rice Vermicelli 0.8-1.0mm 400g

N017

UoM: 40/200g



Shirataki Konjac Noodles 12/170g

N001 しらたき 170g

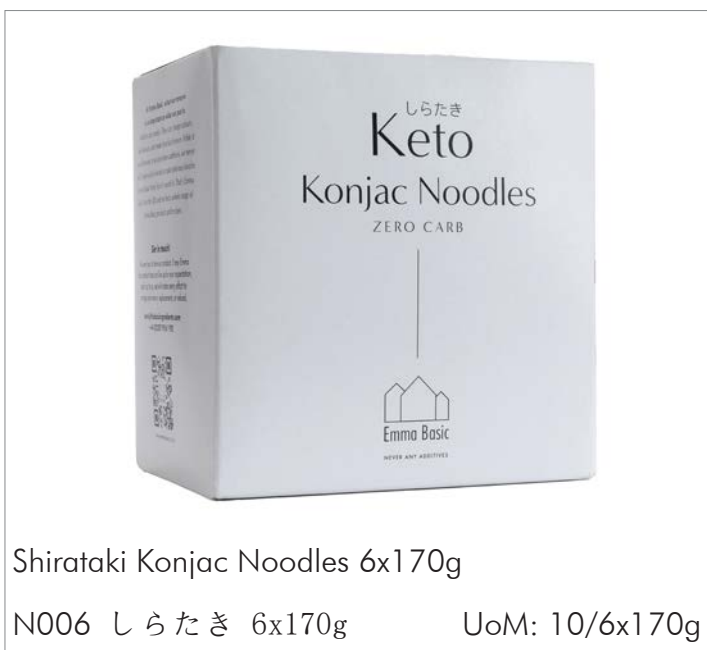
UoM: 12/170g



Shirataki Konjac Noodles 12/200g

N006 しらたき 200g

UoM: 12/200g



Shirataki Konjac Noodles 6x170g

N006 しらたき 6x170g

UoM: 10/6x170g



# Seaweed



S000A - CRISPY SEAWEED 4X20G (PAGE 7)



Seaweed Nori Rolls 100 mm

S008 のりロール 100mm UoM: 16\*500 Sheets



Seaweed Nori Rolls 60 mm

S012 のりロール 60mm UoM: 24\*500 Sheets



# Seaweed



Seaweed Sushi Nori 50 Full Sheets

S007 焼きのり全形

UoM: 80/50Sheets



Seaweed Sushi Nori 7 Full Sheets

S001A 焼きのり全形

UoM: 350/7Sheets



Aonori powder

W030 青のり粉

UoM: 50/200g



Crispy seaweed 4x20g

S000A 韓国味付海苔 20g

UoM: 20/4\*20g



Dry Wakame 50g

S014B ふえるわかめ 50g

UoM: 6/10x50g



Dry Wakame 500g

S015 ふえるわかめ500g

UoM: 20/500g



# Sesame Seeds, Oil & Furikake



Roasted White Sesame Seed 1kg (Vacuum packed)  
G001 いり胡麻白 1kg UoM: 12/1kg



Roasted Black Sesame Seed 1kg (Vacuum packed)  
G003 いり胡麻黒 1kg UoM: 12/1kg



Roasted Sesame White 150g  
G005B いり胡麻白 150g UoM: 8/8x150g



Roasted Sesame Black 150g  
G007B いり胡麻黒 1kg150g UoM: 8/8x150g



Furikake Seasoning 100g  
G009 ふりかけ/拌飯香松 UoM: 12/8x100g



Kimchi Furikake Seasoning 100g  
G009 ふりかけ/拌飯香松 UoM: 12/8x100g

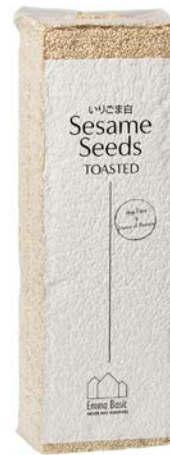
# Sesame Seeds, Oil & Furikake



Yukari 500g

C009 ゆかり 500g

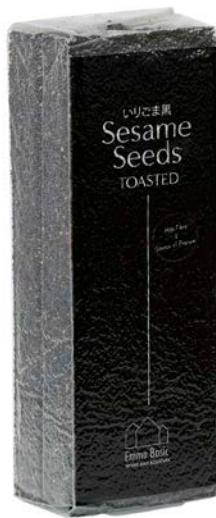
UoM: 6/500g



Roasted White Sesame Seed 1kg

G012A いり胡麻白 1kg

UoM: 12/1kg



Roasted Black Sesame Seed 1kg

G011A いり胡麻黒 1kg

UoM: 12/1kg



Toasted Pure Sesame Seed Oil 2L

C066 純正ごま油2L

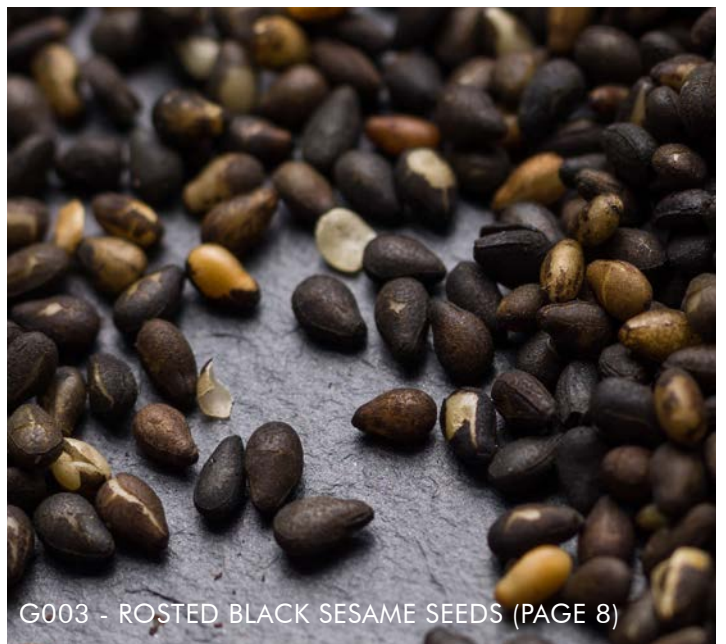
UoM: 6/2L



Toasted Pure Sesame Seed Oil 500ml

G017 純正ごま油 500ml

UoM: 12/500ml



G003 - ROSTED BLACK SESAME SEEDS (PAGE 8)

# Panko & Curry



Breadcrumbs Panko 10kg - 6mm

P001 パン粉 10kg

UoM: 1/10kg



Breadcrumbs Panko 1kg - 10mm

P002 パン粉 1kg

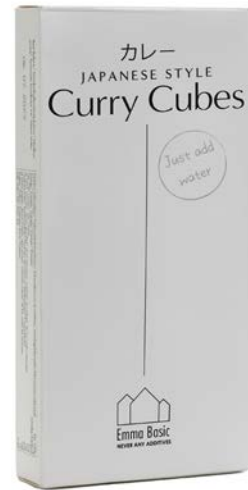
UoM: 10/1kg



Breadcrumbs Panko 200g - 10mm

P003 パン粉 200g

UoM: 40/200g



Japanese Style Curry

C041 カレー 200g

UoM: 12/5x200g



Katsu Curry 1kg

C042 カツカレー1kg

UoM: 10/1kg





# Bamboo Shoots



Bamboo Shoot (Slices) 238g

V016 竹の子スライス 238g

UoM: 30/238g



Bamboo Shoot (Top) 238g

V017 竹の子トップ 238g

UoM: 30/238g



Bamboo Shoot (Whole) 215g

V018 竹の子 215g

UoM: 30/215g



Bamboo Shoot (Slices) 200g

V050 竹の子スライス 200g

UoM: 30/200g



Bamboo Shoot (Top) 200g

V051 竹の子トップ 200g

UoM: 30/200g



Bamboo Shoot (Whole) 200g

V052 竹の子 200g

UoM: 30/200g

# Ginger & Miscellaneous



Pickled Ginger Gari (no colour) 1kg

V001 寿司がり無色 1kg

UoM: 10/1kg



Sushi Ginger Pink 1kg

V002 寿司がりピンク 1kg

UoM: 10/1kg



Shredded Pickled Ginger Benishoga 1kg

V003 紅しょうが 1kg

UoM: 10/1kg



Crispy Bean Curd Roll 180g

V060A 响铃卷 180g

UoM: 30/180g





# Dried Mushrooms



Dried Shiitake Mushroom 4-6cm 1Kg

V010 乾燥椎茸1kg

UoM: 14/1kg



Sliced Dried Winter Shiitake Mushroom 500g

V009 乾燥椎茸スライス 500g

UoM: 6/500g



Dry Shiitake Mushroom 50g

V019 乾燥椎茸 50g

UoM: 24/50g



Dry Porcini Mushroom 45g

V020 牛肝菌 45g

UoM: 24/45g



Dry Black fungus 80g

V021 黒木耳 80g

UoM: 24/80g



V020 - Porcini Mushrooms



# Miso



Miso White 20kg

C074 白味噌 20kg

UoM: 1/20kg



Miso Red 20kg

C076 赤味噌 20kg

UoM: 1/20kg



Miso White 100g

C078 味噌 100g

UoM: 20/100g



Miso Red 200g

C080 赤味噌 200g

UoM: 20/200g



Miso White 1kg

C075 味噌 1kg

UoM: 10/1kg



FD Miso Soup Vegan 10x7.3g

C082 FD 味噌スープ 10x7.3g UoM: 6/10x7.3g

# Frozen



Instant Miso Soup contains Bonito 8/30x8g

W012 味噌スープ

UoM: 8/30x8g

FROZEN PRODUCT



Vegan Gyoza 600g

F101 野菜餃子 600g

UoM: 10/30x20g

FROZEN PRODUCT



Chicken Gyoza 600g

F102 チキン餃子 600g

UoM: 10/30x20g

FROZEN PRODUCT



Chicken Gyoza 1kg

F103

UoM: 10/1kg

FROZEN PRODUCT



Red Kimchi Gyoza 1Kg

F104

UoM: 10/1kg

FROZEN PRODUCT



Prawn Gyoza (with 28% prawn)

F106

UoM: 10/50x20g

# Frozen



Green Vegetable Gyoza

F101Q 青菜餃子

UoM: 10/50x20g



Frozen Pumpkin Croquette 60g

F00001 かぼちゃコロッケ 60g UoM: 100\*60g



Frozen Pumpkin Croquette 60g

F00002 かぼちゃコロッケ

UoM: 10/10x60g



Vegetable Tempura Yasai kakiage 40g

F007 野菜かき揚げ 40g

UoM: 40/6x40g



Bao Bun 30g

F011Q 刈包/Hirata Bun 30g

UoM: 20/6x30g



Emma Basic Bao Bun Clean Label 50g

F012Q 刈包/Hirata Bun 50g

UoM: 10/4x50g



# Frozen

FROZEN PRODUCT



Sushi Ginger Sachet 4g

F017 寿司がり無色小袋冷凍 UoM: 10/200x4g

FROZEN PRODUCT



Seasoned Seaweed Salad Natural

F051 胡麻わかめ 1kg UoM: 10/1kg

FROZEN PRODUCT



Wasabi Sachet 2.5g Frozen

F019 山葵ミニ UoM: 20/200x2.5g

FROZEN PRODUCT



Soybean Edamame Without Pod 1kg

F003 剥き枝豆 1kg UoM: 5/1kg

FROZEN PRODUCT



Soybean Edamame Without Pod 5kg

F004 剥き枝豆 5kg UoM: 2/5kg

FROZEN PRODUCT



Soybean Edamame in Pod 250g

F005 枝豆 250g UoM: 40/250g


# Frozen

**FROZEN PRODUCT**



Soybean Edamame In Pod 1kg  
F006 枝豆 1kg UoM: 10/1kg

**FROZEN PRODUCT**



Soybean Edamame In Pod 5kg  
F008 枝豆 5kg UoM: 2/5kg

**FROZEN PRODUCT**



Frozen Soybean Sheet Roll 300g  
F023 鮮腐竹 300g UoM: 30/300g

**FROZEN PRODUCT**



Fried Tofu 4×4cm 500g  
F024 角揚げ豆腐 500g UoM: 20/500g

**FROZEN PRODUCT**



Fried Tofu 4×4cm 5kg  
F025 角揚げ豆腐 5kg UoM: 2/5KG

**FROZEN PRODUCT**



Soybean Sheet Yuba 20×20cm 260g  
F026 ゆば 260g UoM: 20/260g



# Frozen

FROZEN  
PRODUCT



Breaded Prawn 3L - 10x30g

F00012 エビフライ

UoM: 10/10x30g

FROZEN  
PRODUCT



Shrimp Sushi Ebi 3L

F054 寿司海老 10/60g

UoM: 10/10\*60g







## SHAOXING RICE WINE PRODUCT OF GEOGRAPHICAL INDICATION

Shaoxing Rice Wine is a protected name. According to China government standard GB/T 17946-2008, one can only be legally labelled Shaoxing Rice Wine if it is made of glutinous rice, wheat, and water from the specific lake, Jianhu in Shaoxing, Zhejiang province, China. Pagoda Brand Winery is located on the shore of Jianhu Lake.

Pagoda Brand Rice Wine is made by hand, by people, not by modern mass production line.

Each bottle of Pagoda rice wine is a craftsman's work with its unique personality. The best rice wine is made at Dongzhi, through a minimum of 11 months of natural fermentation. the word "Dong" means "winter" while "Zhi" means "arrival" giving the literal meaning of the festival "the coming of winter".

# Shaoxing Rice Wine



Shaoxing Rice Wine 2/10L

A003 紹興黃酒10L

UoM: 2/10kg



Emma Basic Shaoxing Rice Wine 150ml

A006 紹興黃酒150ml

UoM: 24/150ml



Pagoda Shaoxing Rice Wine (Ben Mei) 14%

A009 塔牌紹興酒本美500ml

UoM: 6/500ml



Pagoda Shaoxing HuaTiao Wine 16%

A012 塔牌紹興花雕酒 640ml

UoM: 12/640ml







FEÍ TSWEÍ  
翡翠



## OUR PRINCIPLES: VENERATE THE LAND, CHERISH THE LAND, GIVE BACK TO THE LAND

From the perspective of the Earth that we live on, we are no more important than a grape vine, nor have the longevity of a stone. Yet, because of our love and awe of nature, we can plant a vineyard in a barren land, build a winery, and make a good bottle of wine. In 2012, Fei Tswei Winery began its journey.

Feitswei (a type of emerald jade) symbolizes a kind of tolerance, embraced by an aura of harmony between heaven and earth. Emerald is a precious stone that represents the essence of spirituality in the mountains and rivers. Jade culture enjoys a long history in China, and the emerald is a dazzling part of that heritage. The family has a long tradition of collecting stones, which has imparted a subtle yet profound influence on the family and their corporate ethos. It is a greater sense of humility and self-awareness, which lies at the heart of Feitswei Winery's core values.



# Fei Tswei Wine



Reserve Cabernet Sauvignon ZODIAC 15%

A020

UoM: 6/75cl



Magma Joyous Red 75cl 14.5%

A021

UoM: 6/75cl



Magma Chardonnay 75cl 13%

A022

UoM: 6/75cl



Cellared Merlot 15.5%

A023

UoM: 6/75cl



Cellared Marselan 2019 15%

A024

UoM: 6/75cl



Reserve Marselan 2021 14.5%

A025

UoM: 6/75cl

# Non-Food



Bamboo Chopsticks Genroku 20cm  
 Z004A 元禄竹割箸 (40prs) UoM: 50/40prs



Bamboo Chopsticks Tensoge 21 cm with Knot  
 Z006 天削竹割箸 (100prs) UoM: 30/100Prs



Bamboo Chopsticks 24cm Carbonised Tensoge  
 Z007 天削竹割箸 茶 (100prs) UoM: 30/100prs



Bamboo Chopsticks Genroku Carbonated Tensoge  
 Z008A 天削竹割箸 茶 (100prs) UoM: 20/100pcs



Bamboo Chopsticks Genroku 20cm  
 Z009 元禄竹割箸 (100prs) UoM: 40/100Prs



Bamboo Genroku Chopsticks with knot 21cm  
 Z009B 元禄竹割箸 (100prs) UoM: 30/100Prs

# Non-Food



Bamboo Rolling Mat

Z011 巻きす

UoM: 10/20Pcs



Green Bamboo Rolling Mat

Z012 青竹巻きす

UoM: 10/20Pcs



Bamboo Tea Whisk (Chasen - 120 Prongs)

Z054 茶筴

UoM: 100/1Pcs



V101 - Japonica Rice Short Grain 10kg (Page 4)



Z006 - BAMBOO CHOPSTICKS TENSOGI 21CM



# Non-Food



Craft Bamboo Chopstick 25cm 5prs

Z056 工艺竹筷

UoM: 100/5pcs



Bamboo Straw Green with Brush

Z057 竹吸管 带刷

UoM: 50/10pcs



Binchotan Charcoal Water Filter 1pc

Z052 滤水备长炭

UoM: 200/1Pcs



Binchotan Charcoal Water Filter 4pc

Z058 滤水备长炭

UoM: 140/4Pcs



White Charcoal Binchotan 10Kg

Z001 白炭備長炭 10Kg

UoM: 1/10kg



Bamboo Charcoal 10Kg

Z002 竹炭 10Kg

UoM: 1/10kg

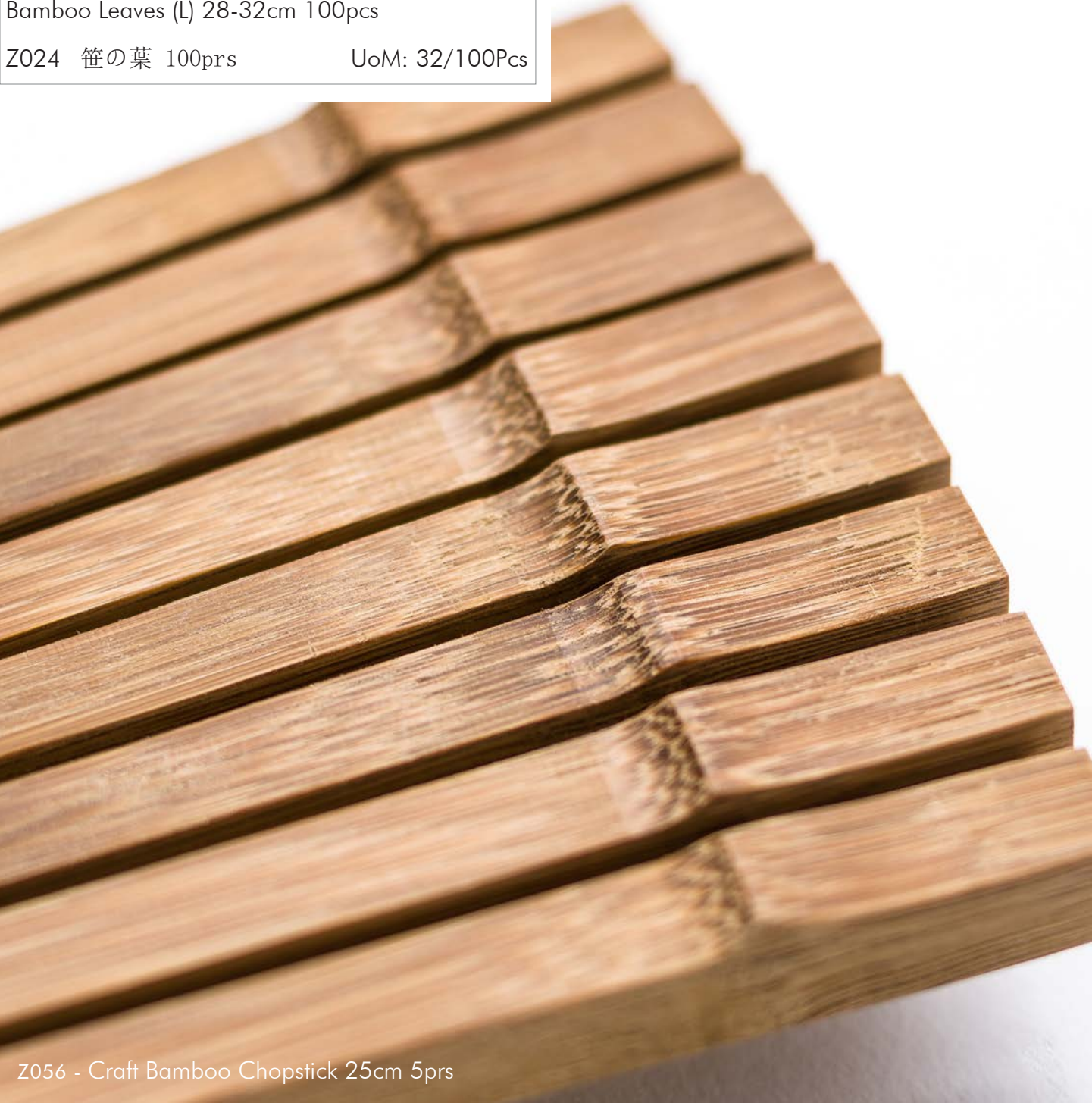
Non-Food



Bamboo Leaves (L) 28-32cm 100pcs

Z024 笹の葉 100prs

UoM: 32/100Pcs



Z056 - Craft Bamboo Chopstick 25cm 5prs





# Arnarlax

SUSTAINABLE ICELANDIC SALMON



Fish Farming



No Antibiotics



Non GMO



## SUSTAINABILITY, IT'S IN OUR NATURE SALMON FROM ICELAND

Pure air and water. And salmon raised the way nature intended. Icelandic fish farming regulations are among the strictest in the world when it comes to environmental impact. Arnarlax constantly strive to improve fish health, reduce environmental impact and add value to the community.

It's what makes our salmon unique. Stunning color. Firm texture. Delicious taste.



# Export - Fresh Salmon

 FROZEN PRODUCT



5-6 Kg

North Atlantic Farmed salmon (Salmo Salar) 5-6 Kg  
F062-5 冰鲜三文鱼HOG UoM: Per kg

 FROZEN PRODUCT



6-7 Kg

North Atlantic Farmed salmon (Salmo Salar) 6-7 Kg  
F062-6 冰鲜三文鱼HOG UoM: Per kg

 FROZEN PRODUCT



7-8 Kg

North Atlantic Farmed salmon (Salmo Salar) 7-8 Kg  
F062-7 冰鲜三文鱼HOG UoM: Per kg

 FROZEN PRODUCT



8-9 Kg

North Atlantic Farmed salmon (Salmo Salar) 8-9 Kg  
F062-8 冰鲜三文鱼HOG UoM: Per kg

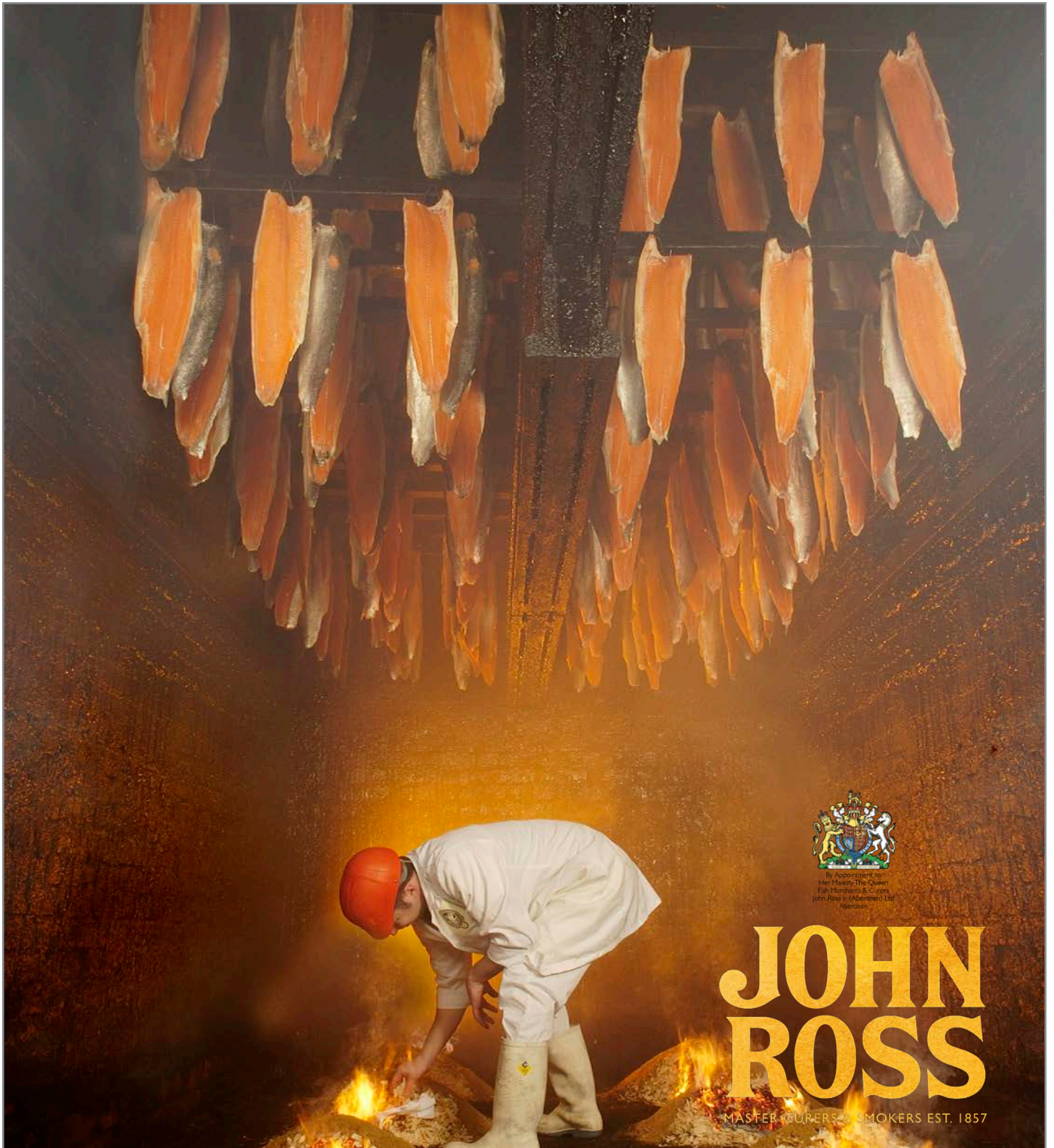
 FROZEN PRODUCT



9+ Kg

North Atlantic Farmed salmon (Salmo Salar) 9+ Kg  
F062-9 冰鲜三文鱼HOG UoM: Per kg





## UNRIVALLED PLACE SALMON FROM SCOTLAND

John Ross uses traditional brick kilns that date back to 1857 to create some of the best smoked salmon in the world. Each salmon is individually hung, by hand, over piles of oak and beech wood chippings that sit atop a cobbled floor with a history as long as the kilns. The piles are then lit and the salmon cold smoked for up to 24 hours.

John Ross is proud to have the Royal family Royal Warrant, the stamp of smoked salmon excellence



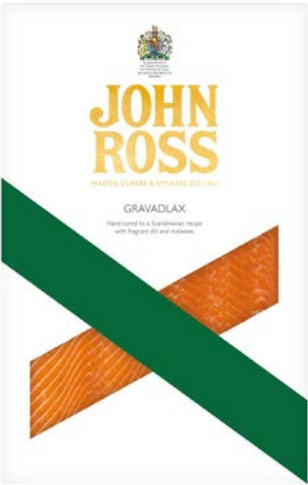
# Export - Smoked Salmon



Scottish Smoked Salmon Traditional 200g  
 F060 烟熏三文鱼200克 UoM: 50/200g



Scottish Smoked Salmon Whisky Infused 200g  
 F075 威士忌烟熏三文鱼 200g UoM: 50/200g



Scottish Smoked Salmon with Dill & Molasses 200g  
 F076 苏格兰烟熏三文鱼 200g UoM: 50/200g



Scottish Smoked Salmon Tea Infused 200g  
 F077 茶熏鲑鱼 200g UoM: 50/200g



John Ross Whole Side Smoked Salmon (Un sliced)  
 UoM: Call for Quote





## UNRIVALLED PLACE SALMON FROM SCOTLAND

A Traditional Smoked Salmon that delivers on taste and quality. Excellence begins with the sourcing of consistent quality raw materials and ingredients procured from our approved suppliers. Only the freshest local salmon from the Scottish sea are used

Our salmon are cured with a dry salt and sugar mix, then cold smoked using a mixture of oak and beech wood to achieve the perfect flavour. An exceptional elegant taste.



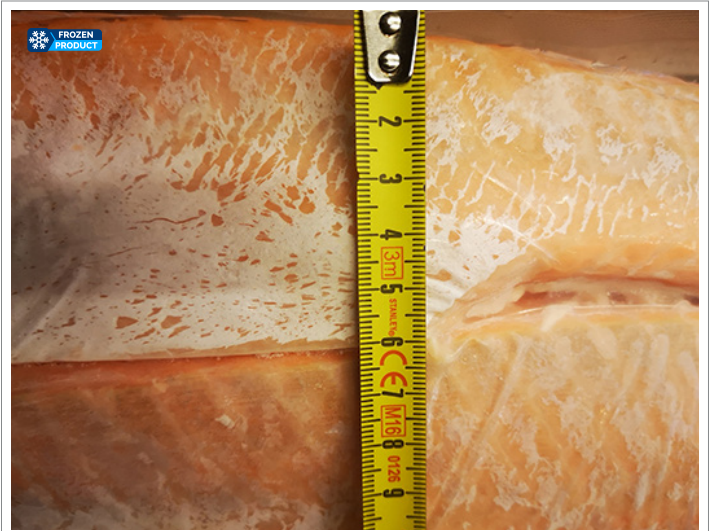
# Export - Frozen Salmon & Smoked Salmon



Atlantic Salmon Sliver Skin Harasu Loin 3cm

F064 鮭ハラス 3cm 1kg

UoM: 10/1kg



Atlantic Salmon Sliver Skin Harasu Loin 6cm

F066 鮭ハラス6cm 1kg

UoM: 10/1kg



Atlantic Salmon Sashimi ready to eat

F068 鮭さしみ

UoM: On Request



Salmon Cubes 10 x 10 mm 1 Kg IVP

F069

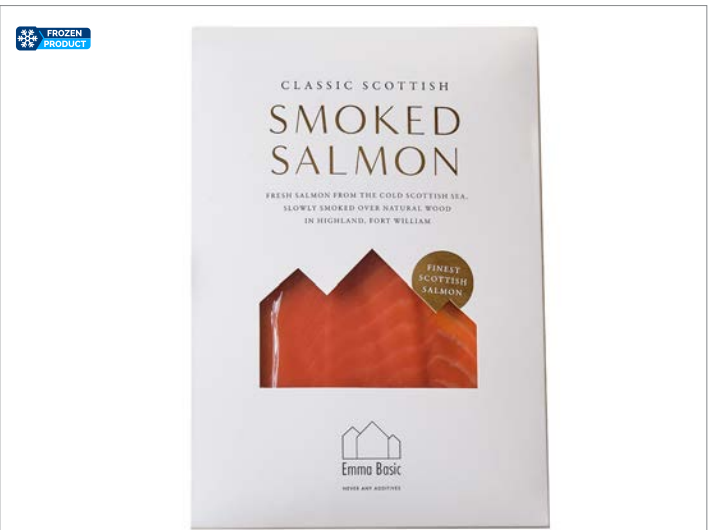
UoM: 5/1Kg



Salmon Fillets 1,4-1,8 Trim B Sup

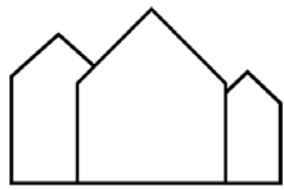
F087

UoM: On Request



Classic Scottish Smoked Salmon 100g

F058 苏格兰 烟熏三文鱼100克 UoM: 70/100g



**Emma Basic**  
NEVER ANY ADDITIVES

Emma Basic, always additive removed.

We exist for a single reason: To remove colorings, preservatives, sweeteners, the never-ending list of legal but harmful ingredients in the modern food industry.

At Emma Basic, what we remove is as important as what we put in. Additives are sneaky. They can change colours, fake flavours, and make food last forever. It takes a lot of work to make delicious food in its most basic form.

That's Emma Basic.



What have we removed ?

**Sugar:** The Benchmark contains 15g /100g sugar, Emma Basic curry is under 10g /100g sugar.

**Emulsifiers:** The benchmark contains 3 Emulsifiers: E473, E322, and E471 to make the curry thicker. We will never ever allow emulsifiers in any of our products.

**MSG:** The benchmark contains 3 MSG's: E621, E631 and D627. For colourings, Emma Basic curry is brighter without use of colourings.

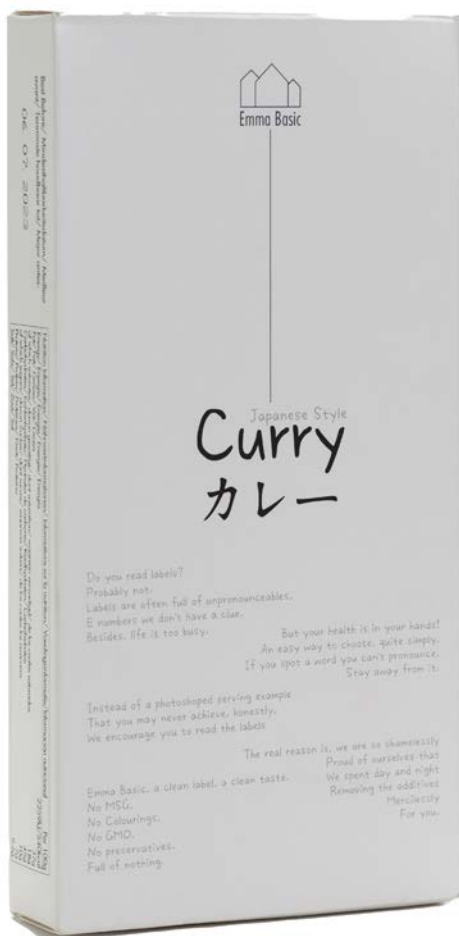
**Acidity Regulator:** Malic acid (E296) is commonly used in Japanese Curry. Emma Basic has no acidity regulators.

**Ultra processed ingredients:** Soybean oil is a highly refined oil extracted using chemical solvents. We believe health-conscious consumers prefer oils which are physically pressed, not chemically refined.

**Colourings:** You may surprise to discover Emma Basic curry is brighter than the benchmark without using colourings E150a.

**Allergens:** Milk and gluten are removed from Emma Basic. suitable for vegans.

**Milk:** Emma Basic curry contains no animal milk therefore is suitable for vegans.







## TARTAN BLANKETS

This blanket has been designed especially for Emma Basic by Scottish designer Araminta Campbell.

Weaving the Emma Basic story through the colours of orange, red, white, blue, and green. The orange and red within the design represent the salmon fan, showcasing the exceptional quality of the Scottish Salmon, whilst the white twill showcases the clean, simple, signature of the brand. The blue hues reflect the crystal-clear ocean water of Scotland alongside the vivid blue of the St Andrews flag. With a diverse and rich landscape, the greens within the tartan embody the vibrant colours of the Scottish countryside.

Made in Scotland from the finest 100% lambswool, this limited-edition was lovingly woven in an artisan mill using centuries old skills to ensure the provenance and quality of the piece.

*Araminta Campbell*



## DESSERTS

At Emma Basic, what we remove is as important as what we put in. Additives are sneaky. They can change colours, fake flavours, and make food last forever. While it would be easy to accept these additives, we never will. It takes a lot of work to make delicious food in its most basic form, but it's worth it. That's Emma Basic.



# Export - Desserts



Carrot Cake

F029

UoM: 10/44g\*30



Cold Set Vanilla Cheesecake

F030

UoM: 10/44g\*30



Red Velvet Cake

F031

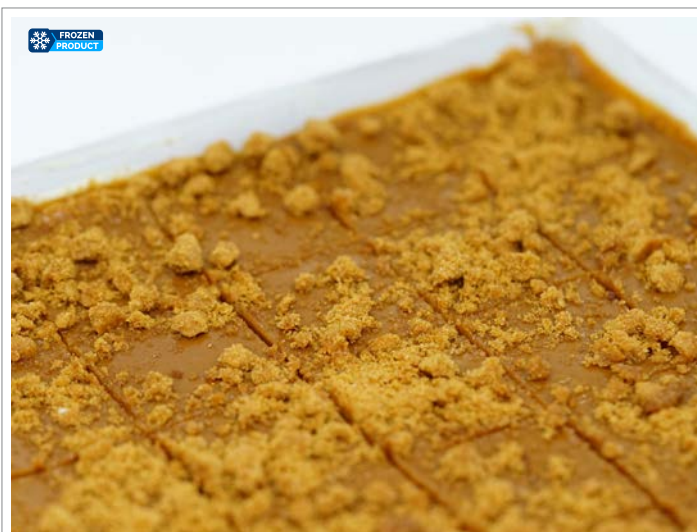
UoM: 10/44g\*30



Victoria Sponge Cake

F032

UoM: 10/44g\*30



Cheesecake 44g

F028

UoM: 10/44g\*30



Creme Brulee Rians 6/2X100G

F037

UoM: 6/2\*100G





## CHEESE

Our story begins in the heart of Berry, where our traditional know-how honours the good products that make up our terroir: tasty faisselles, goat cheese with character, gourmet desserts. This taste for authenticity crosses time and generations to offer you unique moments of tasting. A story born in Rians, which continues day after day with you.

# Export - Cheese



Le Roulé Garlic & Herb

C205

UoM: 10/125g



Le Roulé Cranberry

C201

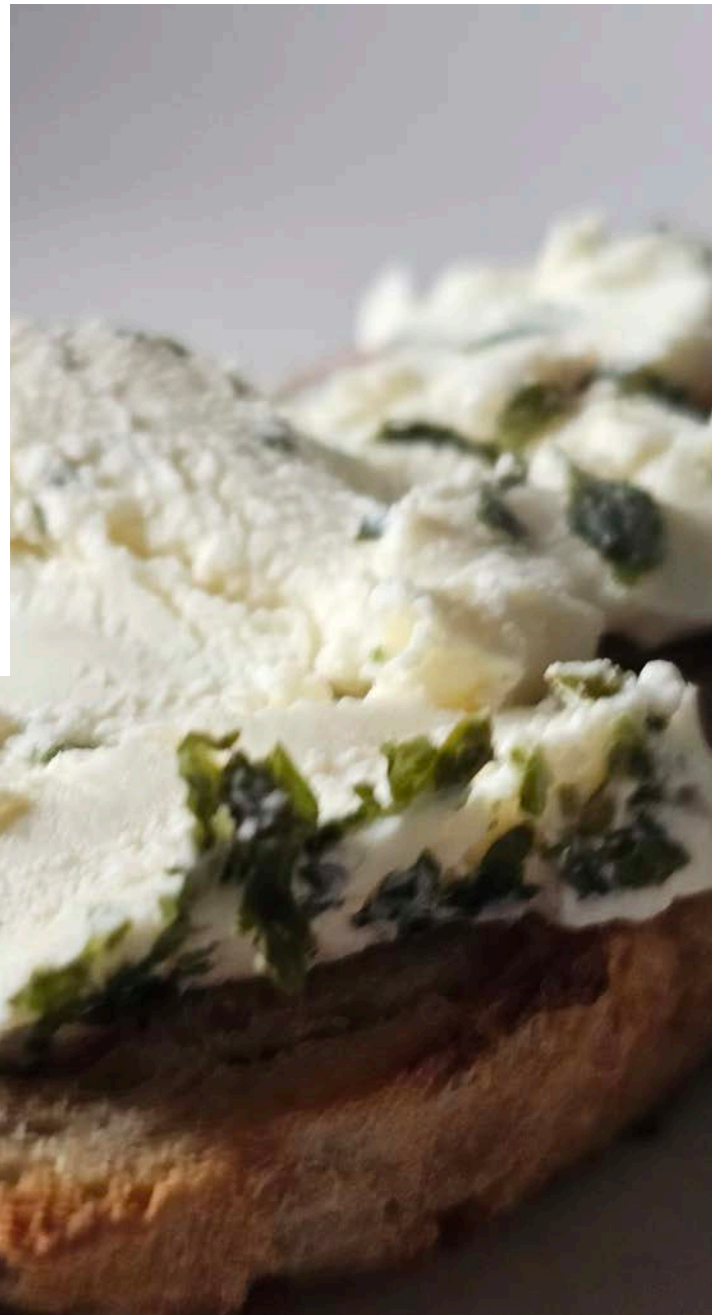
UoM: 6/125g



Le Roulé Pineapple

C203

UoM: 6/125g







Nancy D.

Oliver Hart

Nancy D.  
 The Bank of America  
 Oliver Hart  
 The Bank of America  
 Oliver Hart  
 The Bank of America



# OUR TEAM



EMMA DU  
FOUNDER & CEO  
emma@thebasicingredients.com  
+44 7894 512430



OLIVER JAMES HART  
SALES DIRECTOR  
oliver@thebasicingredients.com  
+44 7719 345 299



NANCY DENG  
TECHNICAL ACCOUNT MANAGER  
nancy@thebasicingredients.com  
+44 7521 279 887



LING HSUAN CHIU  
PURCHASING MANAGER  
ling@thebasicingredients.com



CALLUM O'GRADY  
FINANCE MANAGER  
callum@thebasicingredients.com



JAMES CLARK  
IT & ECOMMERCE MANAGER  
james@thebasicingredients.com



ANGUS OSBORNE  
SUPPLY CHAIN MANAGER  
Angus@thebasicingredients.com



ITSURO KUBO  
Director - The Basic Netherlands  
Itsuro@thebasicingredients.com



Ran Kawaguchi  
wholesale Manager  
Ran@thebasicingredients.com  
+44 7305 075030

# Get in touch!

We want you to love our product. If any Emma Basic product does not live up to your expectation, reach out to us, we will make every effort to arrange your return, replacement, or refund.

[boris@thebasicingredients.com](mailto:boris@thebasicingredients.com)

Tel: +44(0)20791611192

**THE  
BASIC  
INGREDIENTS**  
LONDON

[www.thebasicingredients.com](http://www.thebasicingredients.com)

UK Office: 18 Platt Street, London NW1 1RP  
EU Office: Westplein 12-14, 3016BM, Rotterdam